

The background is a dark, monochromatic photograph of a grand, ornate architectural interior, likely a cathedral or a large office building. The ceiling is the focal point, featuring intricate geometric patterns and recessed lighting. A large, thin-lined circle is superimposed over the center of the image, containing the text. The overall aesthetic is sophisticated and classic.

500
GRISWOLD

Premium Office Available

for Lease

500 Griswold—The Guardian Building

32nd Floor

DETAILS

- Top of the line opportunity
- Up to 16,555 SF
- 14' Ceilings
- Natural light with expansive views of the Detroit River
- Direct elevator access
- Private restrooms
- Available immediately
- \$32.00 PSF + electric
- Historic masterpiece
- Art Deco Class “A” office building
- Alley loading area
- Open floor plan
- Prime Financial District location
- On-site 24/7 security
- Incredible views of Downtown Detroit
- Highest full floor available in the building
- Spectacular 150’ vaulted lobby



Christos Moisides

CMoisides@400monroe.com

313.309.2414

www.400Monroe.com

400 MONROE ASSOCIATES

Krystol Rappuhn

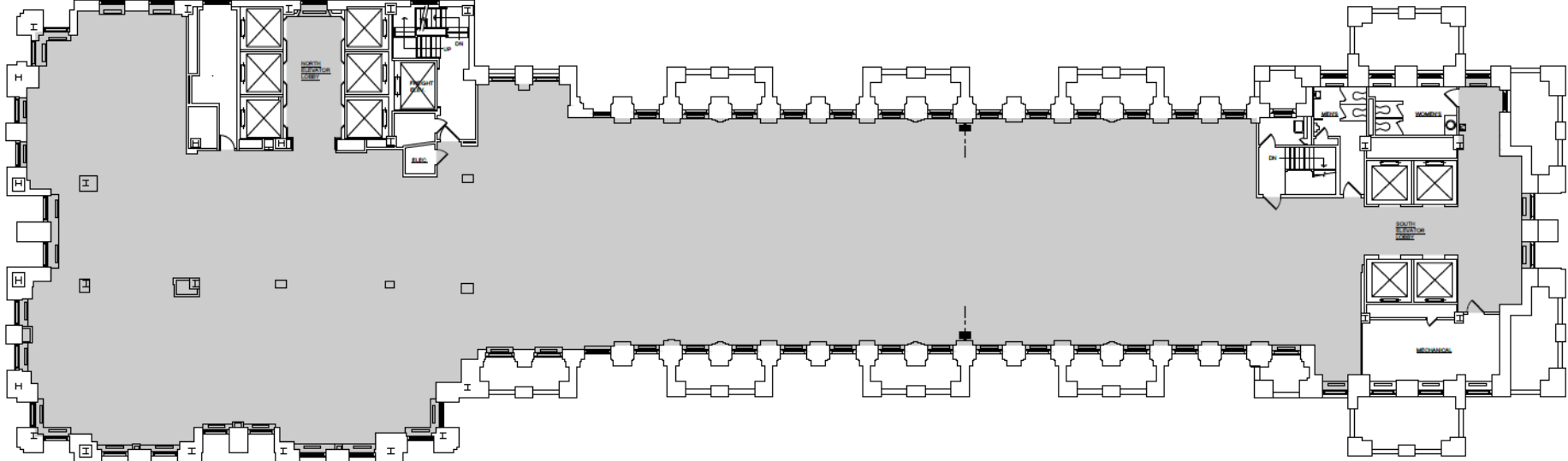
KrystolRappuhn@BeanstalkRES.com

313.446.8060

www.BeanstalkRES.com



32ND FLOOR—PENTHOUSE SUITE



EXISTING SPACE

